

NinjaTrader can currently be used with any of the following:

**Market Data Providers**[Kinetick](#)[eSignal](#)[Google Finance](#)[IQFeed from Telvent DTN](#)[TradeStation](#)[Yahoo Finance](#)**Brokerage Providers**[CQG](#)[GAIN Capital/FOREX.com](#)[GFT \(In Beta\)](#)[Interactive Brokers](#)[MB Trading](#)[Patsystems](#)[PFGBEST.com](#)[TD Ameritrade](#)[Trading Technologies](#)[Vision Financial Markets](#)[Zen-Fire](#)

## NinjaTrader 7 Installation Guide

Dear NinjaTrader User:

NinjaTrader 7.0.1000.5 is compatible with Microsoft Windows 7 Service Pack 1. Please thoroughly read the information on this page prior to installing.

You can skip directly to Step 1 below if

This is your first NinjaTrader installation

You are upgrading from version 7.0.1000.3 Beta or 7.0.1000.4

If you are upgrading from version 7.0.1000.2 or earlier please continue reading and **DO NOT** uninstall NinjaTrader prior to running through the installation steps to follow.

Migrating from NinjaTrader 6.5? [Read the migration guide.](#)

## Upgrading from NinjaTrader 7.0.1000.2 or earlier

If you are currently using any commercial 3rd party partner indicators or strategies we advise you contact the partner prior to upgrading to obtain NinjaTrader 7.0.1000.3 or later compatible versions of their products. There is a high likelihood that any 3rd party product you are using in NinjaTrader 7.0.1000.2 or earlier will not work (incompatible) with NinjaTrader 7.0.1000.3 and any future NinjaTrader version.

## Why are 3rd party products from Version 7.0.1000.2 or earlier incompatible?

The NinjaTrader 3rd party partner base is over 220 strong and growing every day. This thriving ecosystem of innovative applications allows you to extend the NinjaTrader application to fit your needs ensuring you get the most out of your NinjaTrader investment. Our partner program would not have been possible without the ability for our partners to protect their IP (Intellectual Property) from reverse engineering attempts. To ensure that our users continue to have access to a broad base of custom indicators and strategies we have introduced a change in how IP is protected. We changed the vendor that provided us with the technology to protect our IP. As such 3rd party products protected with the old technology needed to be updated to be protected by the new vendor as well in order to be compatible with NinjaTrader 7.0.1000.3 or later.

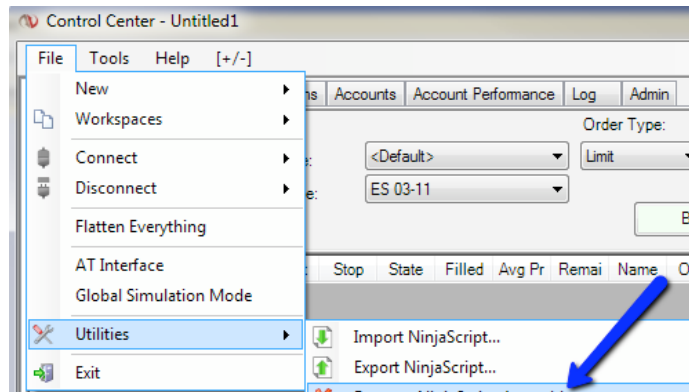
## Step 1

To install NinjaTrader 7.0.1000.5, click on the "Install" button below. The installer will detect and notify you if you are required to perform Step 2 below.

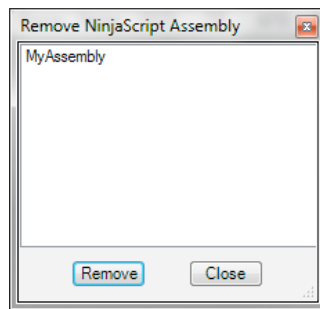
## Step 2

1. Only perform these steps if you are notified to do so during Step 1 above
2. If you already have Windows 7 Service Pack 1 (SP1) installed then you must follow step 3 otherwise you can skip to step 4. You can check if you have SP1 installed following the "Do I have SP1 Installed" near the bottom of this page.
3. Uninstall SP1 by following these [instructions](#).

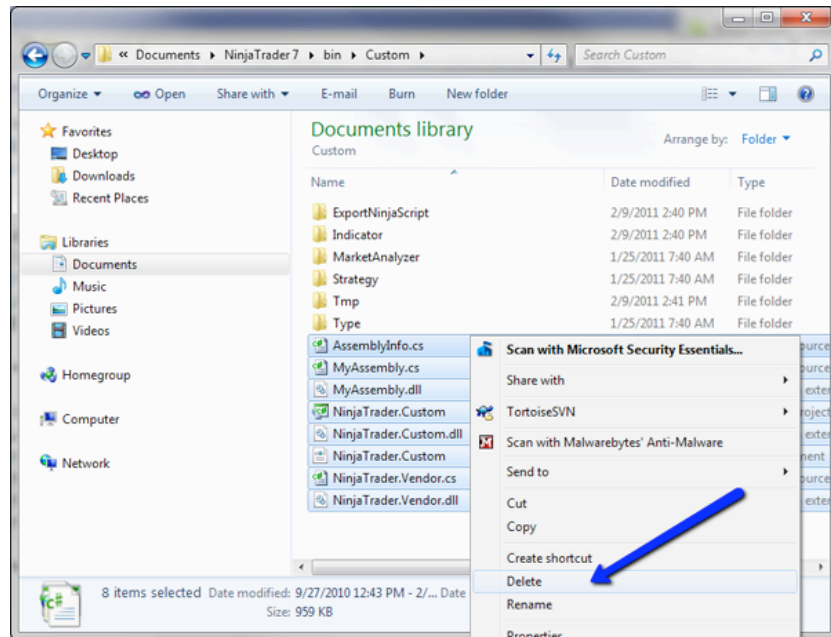
4. If you have previously installed a 3rd party commercial indicator or strategy via a vendor provided installer program please uninstall these components via the vendor provided uninstaller or the Windows Control Panel "Uninstall or change a program" (might be named Add/Remove Programs)
5. Start NinjaTrader 7
6. From within the Control Center window, select the menu File > Utilities > Remove NS Assembly



7. Within the "Remove NinjaScript Assembly" window, remove all items listed in this window



8. Close NinjaTrader
9. Uninstall NinjaTrader 7 via Windows Control Panel "Uninstall or change a program" (might be named Add/Remove Programs)
10. The next two steps involve the deletion of files related to 3rd party indicators or strategies. Your custom scripts and user data such as trade, chart, workspace data and templates will be maintained.
11. Delete the following folder if it exists
  - 32-bit PC – "C:\Program Files\NinjaTrader 7"
  - 64-bit PC – "C:\Program Files (x86)\NinjaTrader 7"
12. Delete all files (not folders) within the folder "Documents\NinjaTrader 7\bin\Custom". The image below is an example of how to delete files within this folder. It does not represent the actual files on your computer. You may have more or less files.



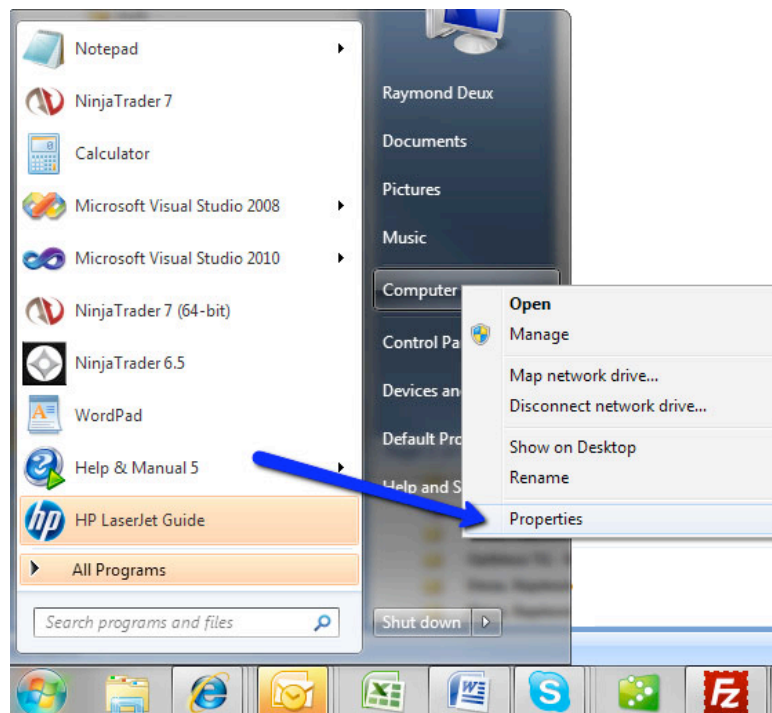
13. Your current installation is now ready for upgrade

14. Click on the "Install" button in Step 1

Should you require assistance with the installation of NinjaTrader 7.0.1000.3 Beta or later please [send an email to support](#).

### Do I have SP1 installed?

1. Click the Windows Start icon (lower left corner of desktop) and right click on "Computer" and select the "Properties" menu as per the image below.



2. You have SP1 installed if you see "Service Pack 1..." as per the image below.

