

Futures I-Trade Show

Short term e-mini strategies *that work*

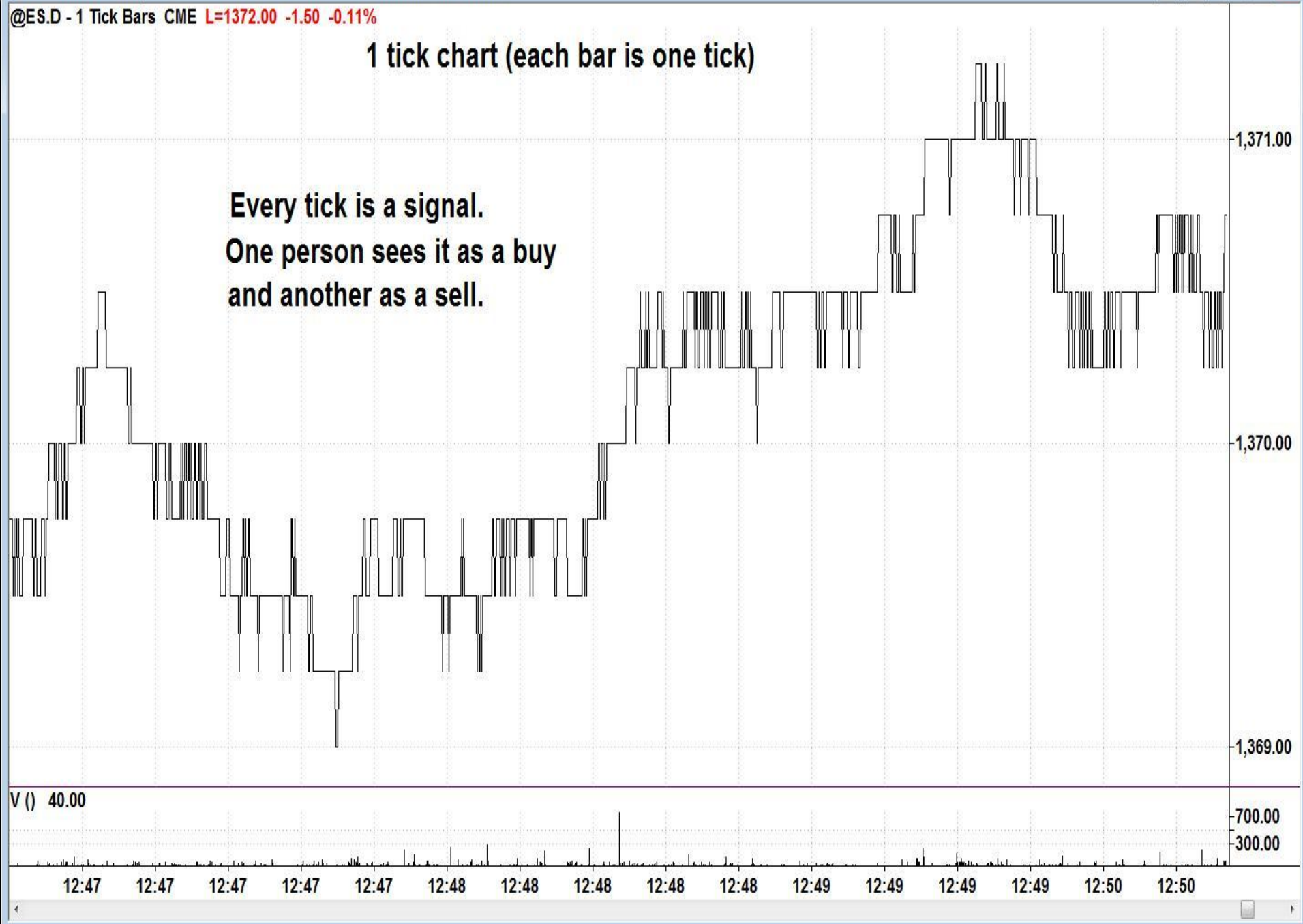
Keynote presented by:

Al Brooks

@ES.D - 1 Tick Bars CME L=1372.00 -1.50 -0.11%

1 tick chart (each bar is one tick)

Every tick is a signal.
One person sees it as a buy
and another as a sell.



ESM08.D - 5 min CME L=1372.00 -1.50 -0.11% MAX 20 (20) 1373.72

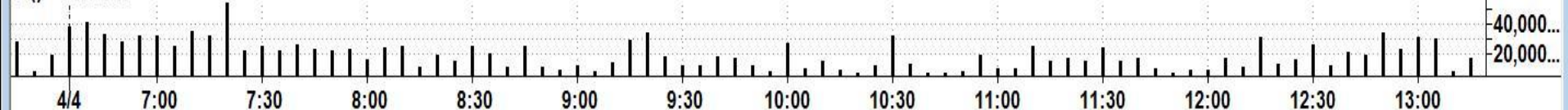
Why 5 min charts and not 1 or 3 min,
which offer many more set-ups?

My profit is much greater and more consistent
with 5 min charts.

I simply can't read fast enough
and place orders correctly on 1 or 3 min charts.

Also, they have too many losers.

V () 16953.00



ESM08.D - 5 min CME L=1372.00 -1.50 -0.11% MAX 20 (20) 1373.72

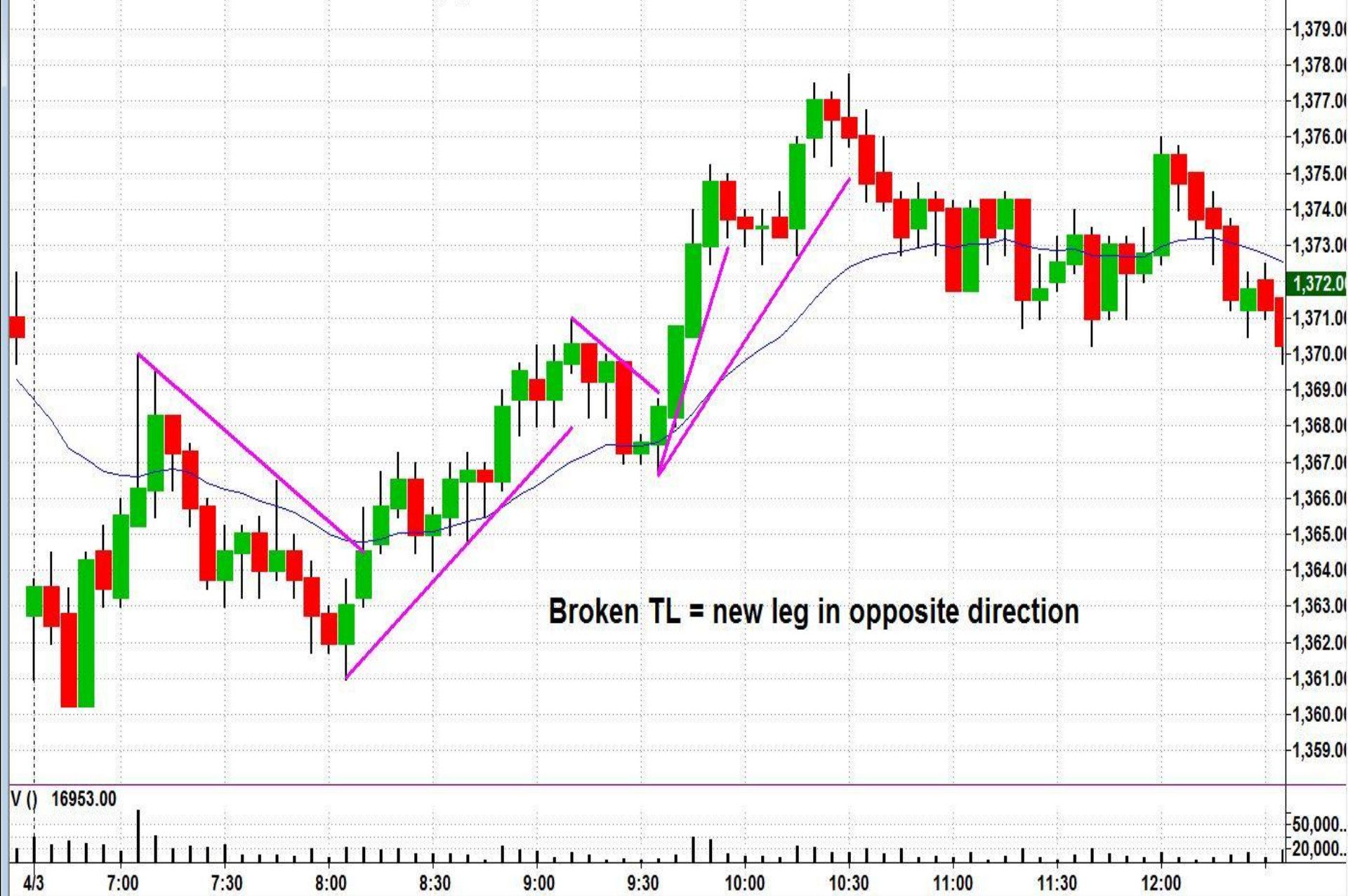


ESM08.D - 5 min CME L=1372.00 -1.50 -0.11% MAX 20 (20) 1373.72

Look for all Trendlines



ESM08.D - 5 min CME L=1372.00 -1.50 -0.11% MAX 20 (20) 1373.72



ESM08.D - 5 min CME L=1372.00 -1.50 -0.11% MAX 20 (20) 1373.72



ESM08.D - 5 min CME L=1372.00 -1.50 -0.11% MAX 20 (20) 1373.72



V () 16953.00

13:00 4/3 7:00 7:30 8:00 8:30 9:00 9:30 10:00 10:30 11:00 11:30 12:00 12:30

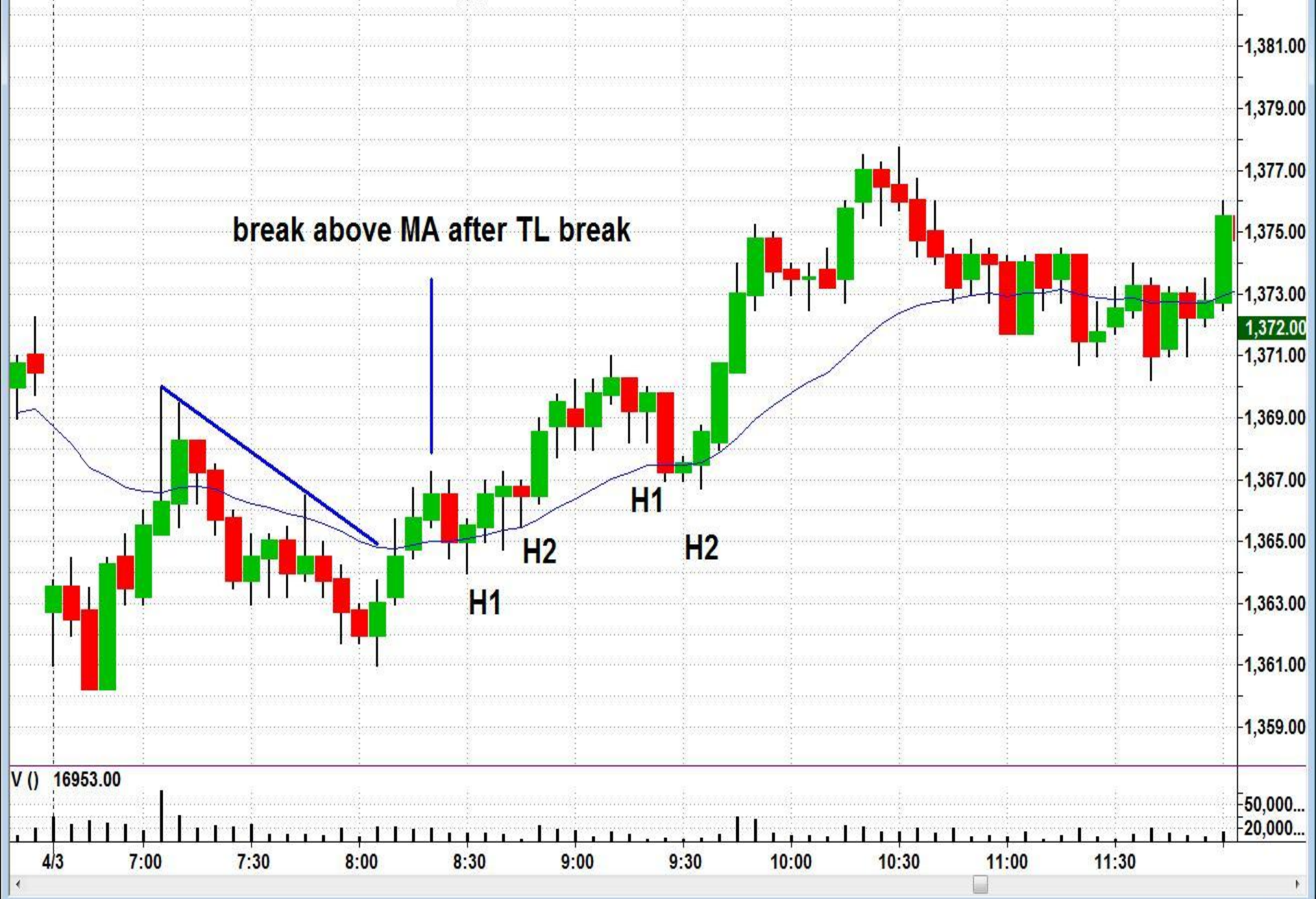
50,000...
20,000...

ESM08.D - 5 min CME L=1372.00 -1.50 -0.11% MAX 20 (20) 1373.72

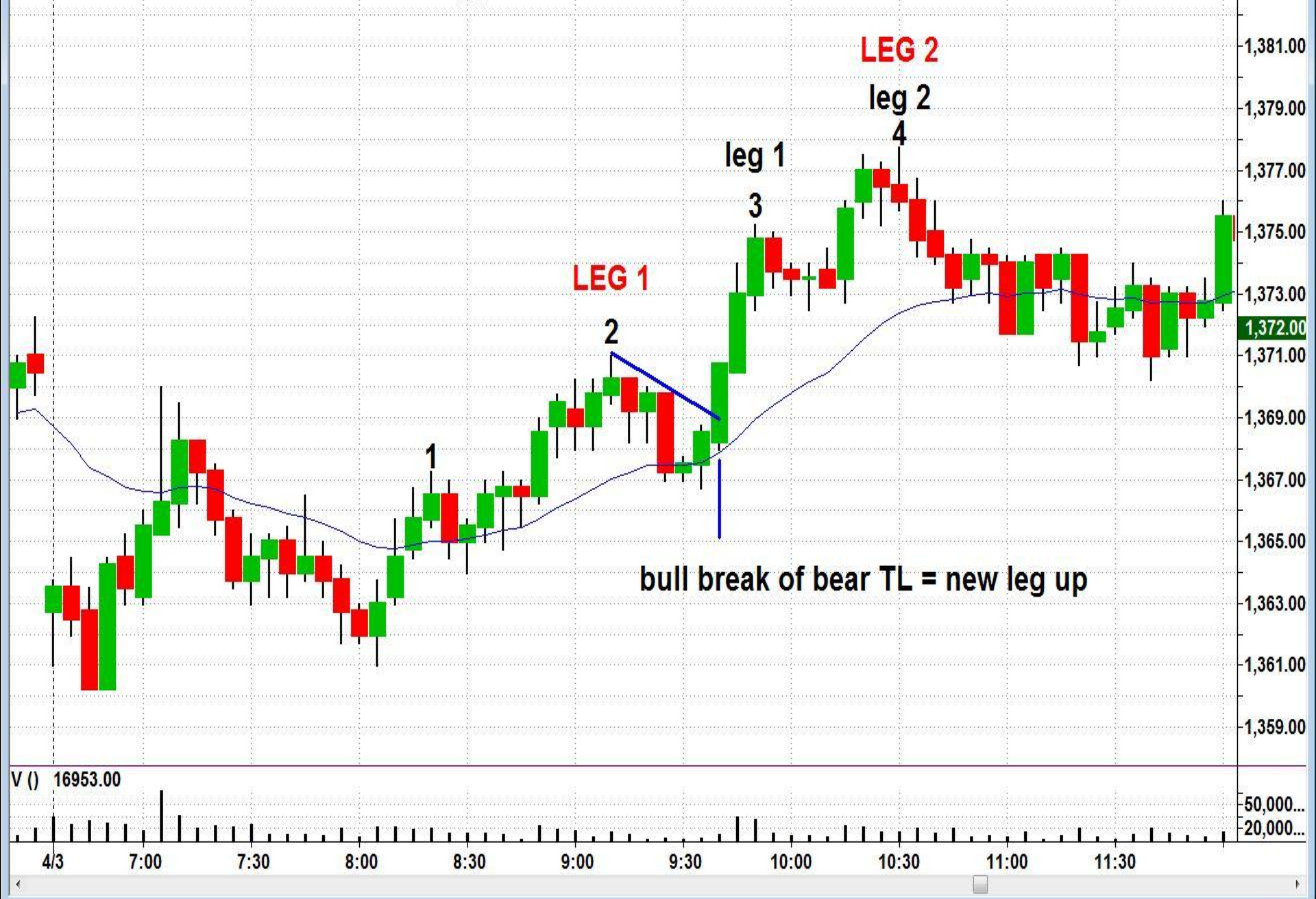
Variant: H1 can also be 1st up close after 1st bar with down close.



ESM08.D - 5 min CME L=1372.00 -1.50 -0.11% MAX 20 (20) 1373.72



ESM08.D - 5 min CME L=1372.00 -1.50 -0.11% MAX 20 (20) 1373.72



ESM08.D - 5 min CME L=1372.00 -1.50 -0.11% MAX 20 (20) 1373.72



--	--

1,382.00
1,380.00

1,380.00

1.270.00

1 376 00

1

1,364.00

-1,362.00

-1,360.00

1,050.00

[illegible]

50,000..

20,000..

with TradeStat

ESM08.D - 5 min CME L=1372.00 -1.50 -0.11% MAX 20 (20) 137...

**Buy on a stop at
1 tick above prior bar's H**



ESM08.D - 5 min CME L=1372.00 -1.50 -0.11% MAX 20 (20) 1373.72

You need a 6 tick breakout to make 4 ticks



ESM08.D - 5 min CME L=1372.00 -1.50 -0.11% MAX 20 (20) 1373.72

Do a Google search for Paul Rotter

**He daytrades 150,000 contracts/day,
scalping about 3 ticks.**

Rumored to net \$60 million/year.

www.trading-naked.com/paul_rotter.htm

1,372.00

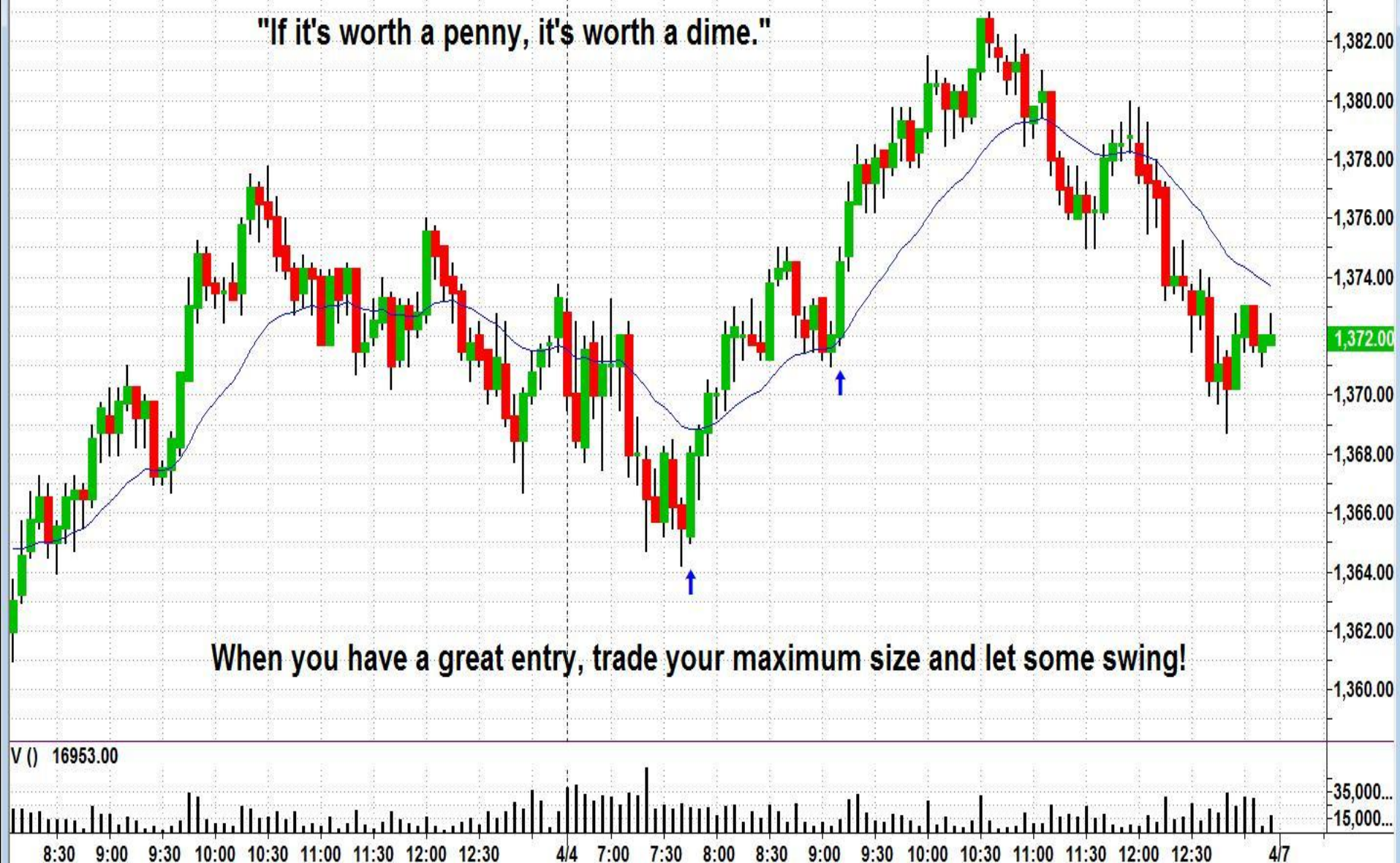
V () 16953.00

9:00 9:30 10:00 10:30 11:00 11:30 12:00 12:30 4/9 7:00 7:30 8:00 8:30 9:00

ESM08.D - 5 min CME L=1372.00 -1.50 -0.11% MAX 20 (20) 1373.72

Quote attributed to Warren Buffett:

"If it's worth a penny, it's worth a dime."



ESM08.D - 5 min CME L=1372.00 -1.50 -0.11% MAX 20 (20) 1373.72

Almost always want 2 reasons to take a trade.

A 2nd entry alone qualifies. Or, you need 2 others, like

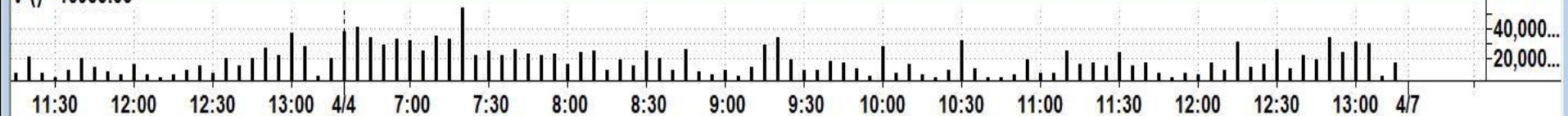
Failed Breakout of anything: Prior H or L, TL, Trend Channel, flag, etc.

Strong Reversal Bar

MA pullback

**Act quickly and don't debate whether both are adequate...ANY TWO things are good enough!!**

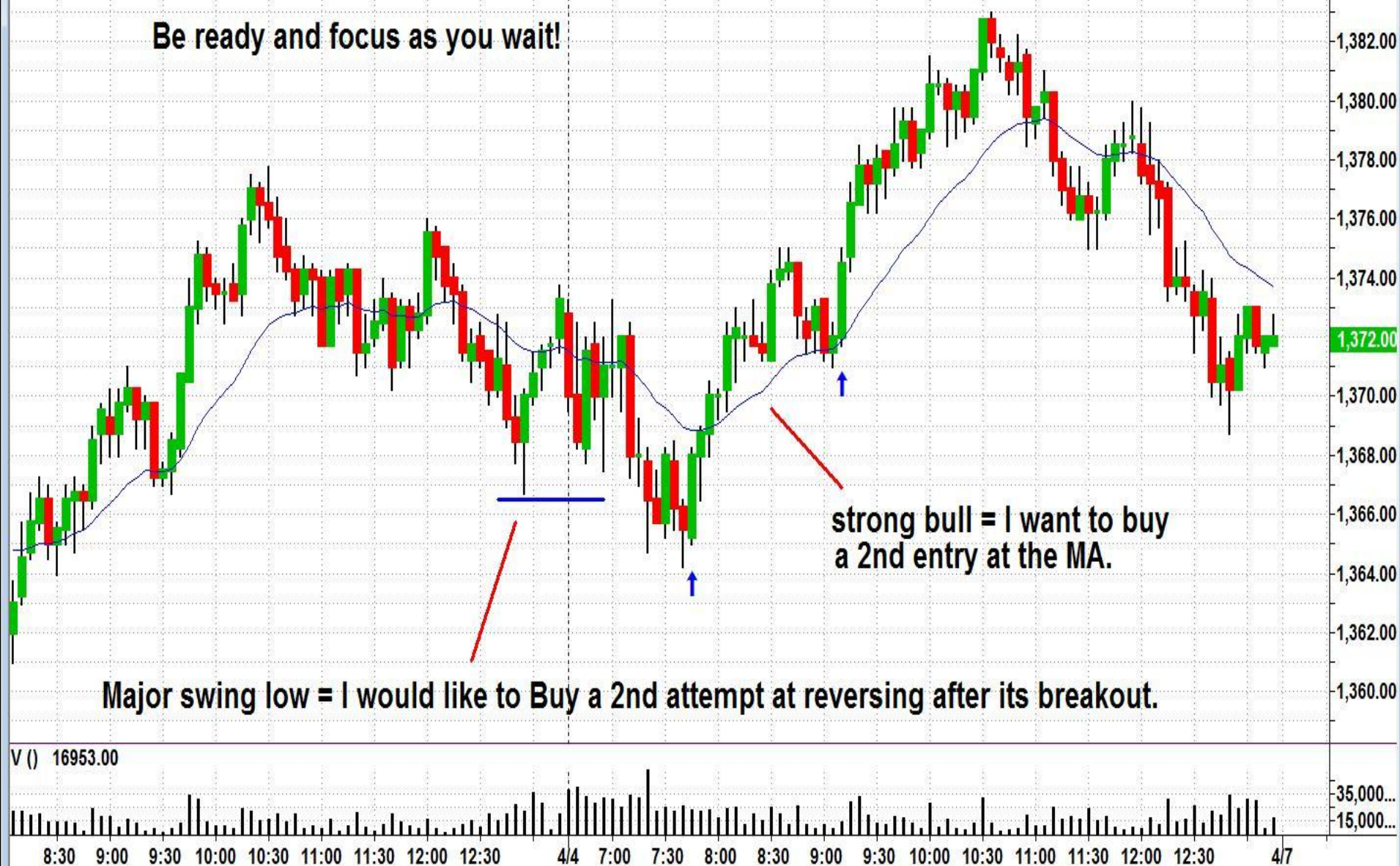
V () 16953.00



ESM08.D - 5 min CME L=1372.00 -1.50 -0.11% MAX 20 (20) 1373.72

Learn to anticipate so you will be ready to take the trade.

Be ready and focus as you wait!

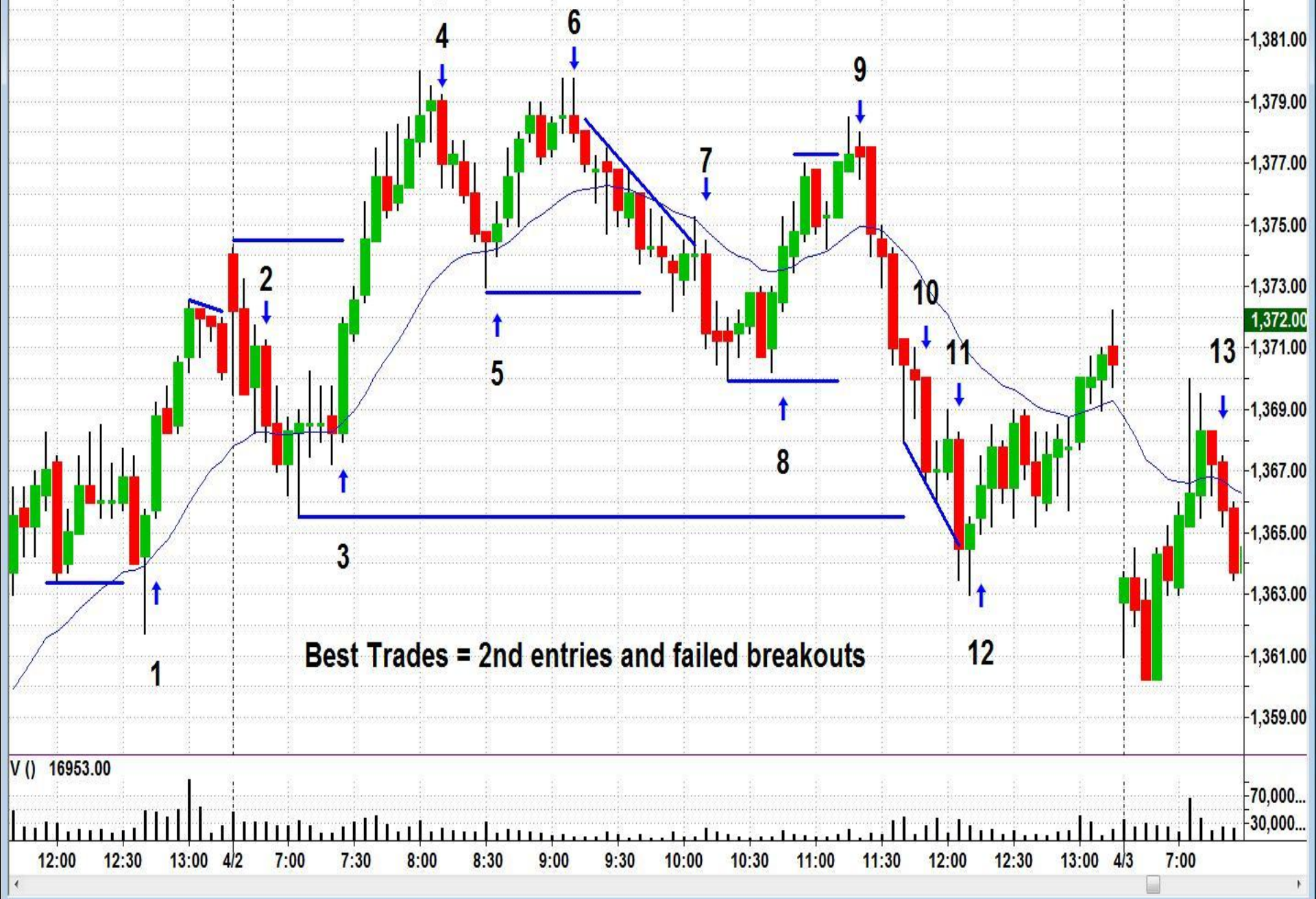


Major swing low = I would like to Buy a 2nd attempt at reversing after its breakout.

strong bull = I want to buy a 2nd entry at the MA.

V () 16953.00

ESM08.D - 5 min CME L=1372.00 -1.50 -0.11% MAX 20 (20) 1373.72



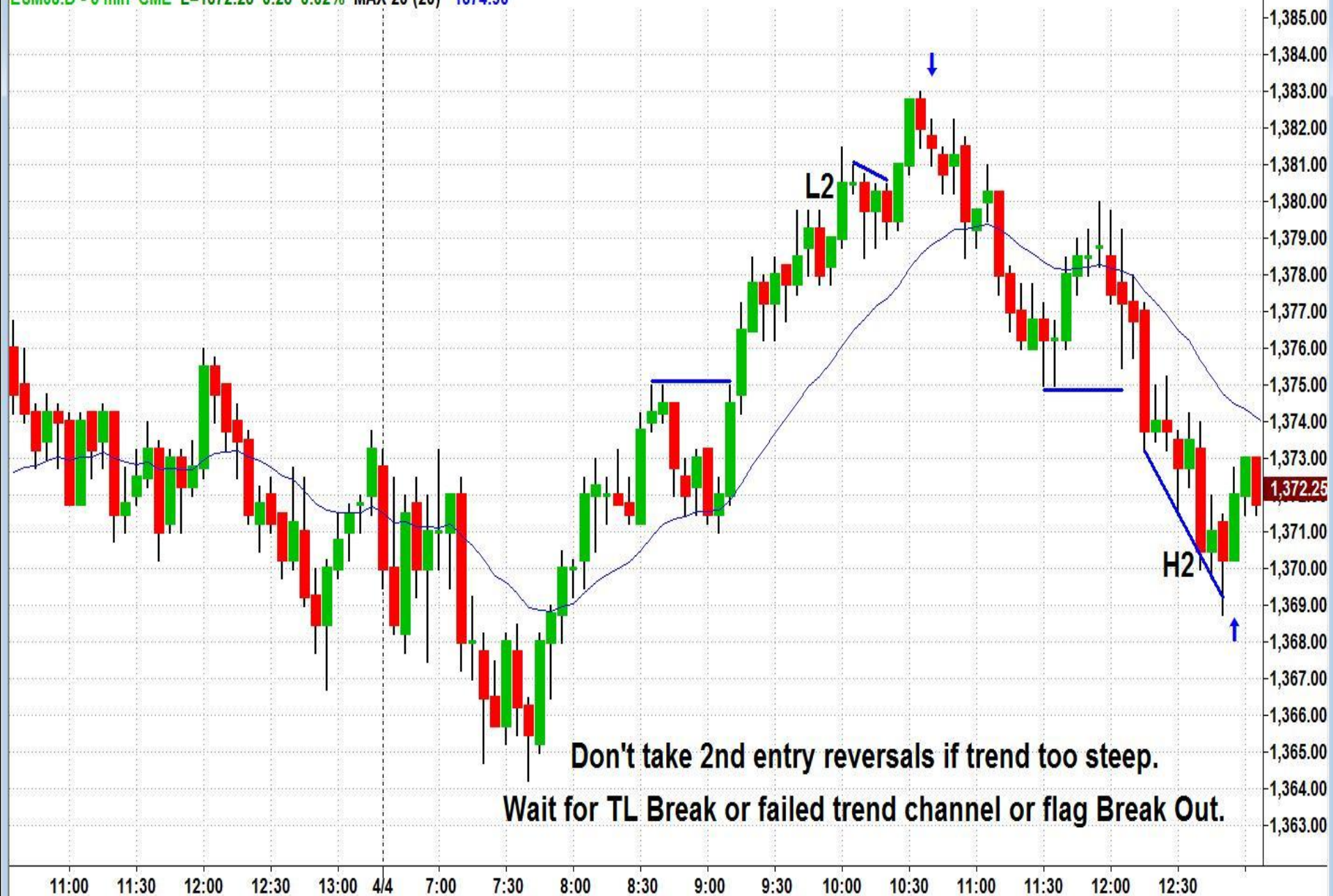
ESM08.D - 5 min CME L=1372.00 -1.50 -0.11% MAX 20 (20) 1373.72

Concentrate on the BEST Trades!!**Don't take every signal, but you must take the best ones.**

ESM08.D - 5 min CME L=1372.00 -1.50 -0.11% MAX 20 (20) 1373.72



ESM08.D - 5 min CME L=1372.25 0.25 0.02% MAX 20 (20) 1374.90



ESM08.D - 5 min CME L=1372.00 -1.50 -0.11% MAX 20 (20) 1373.72

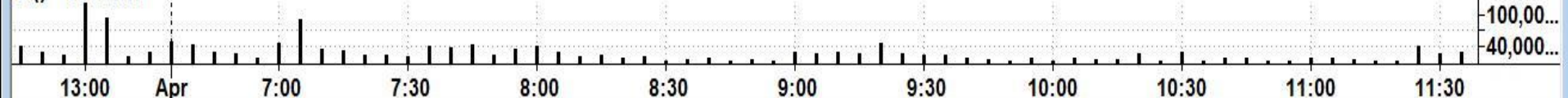


ESM08.D - 5 min CME L=1372.00 -1.50 -0.11% MAX 20 (20) 1373.72

Break of Bull TL not enough.
There must be a strong leg down or strong reversal bar.
If not, only take long entries.

Huge Gap up
No strong down momentum, despite breaks of bull TLs.
No Profitable bear scalps
No Bear Reversals

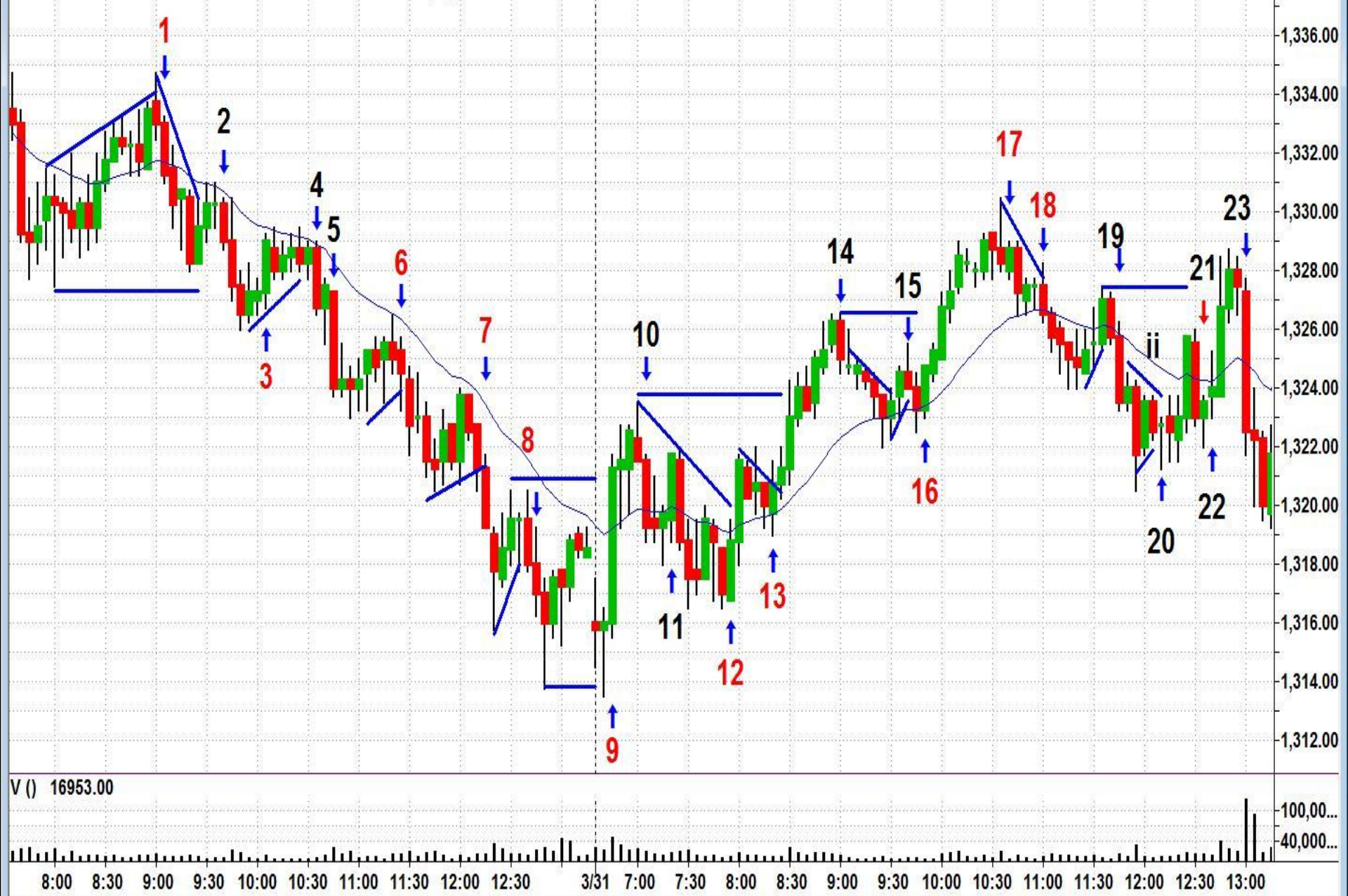
V () 16953.00



ESM08.D - 5 min CME L=1370.25 46.25 3.49% MAX 20 (20) 1367.34



ESM08.D - 5 min CME L=1372.00 -1.50 -0.11% MAX 20 (20) 1373.72

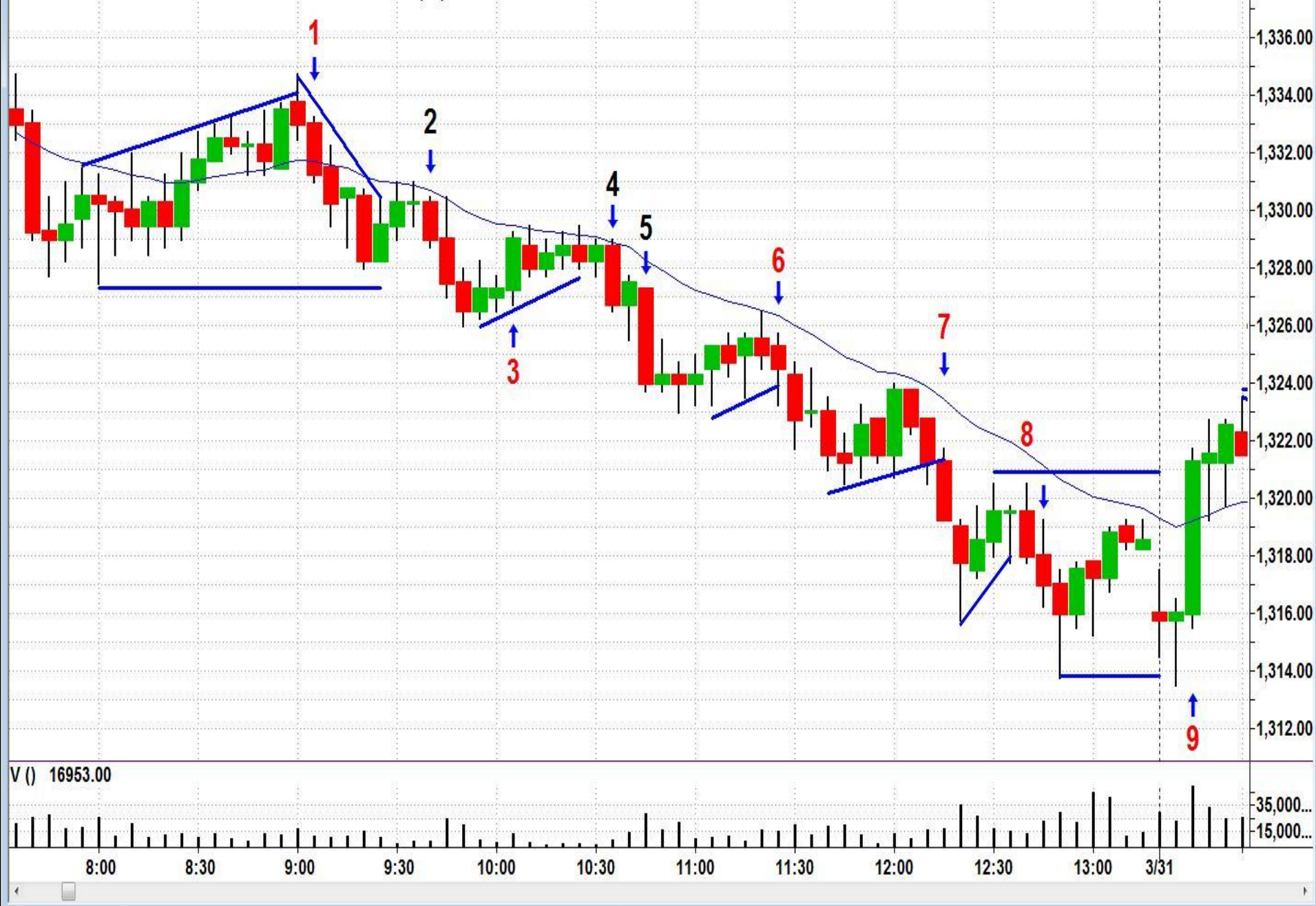


V () 16953.00

8:00 8:30 9:00 9:30 10:00 10:30 11:00 11:30 12:00 12:30 3/31 7:00 7:30 8:00 8:30 9:00 9:30 10:00 10:30 11:00 11:30 12:00 12:30 13:00

40,000... 100,00...

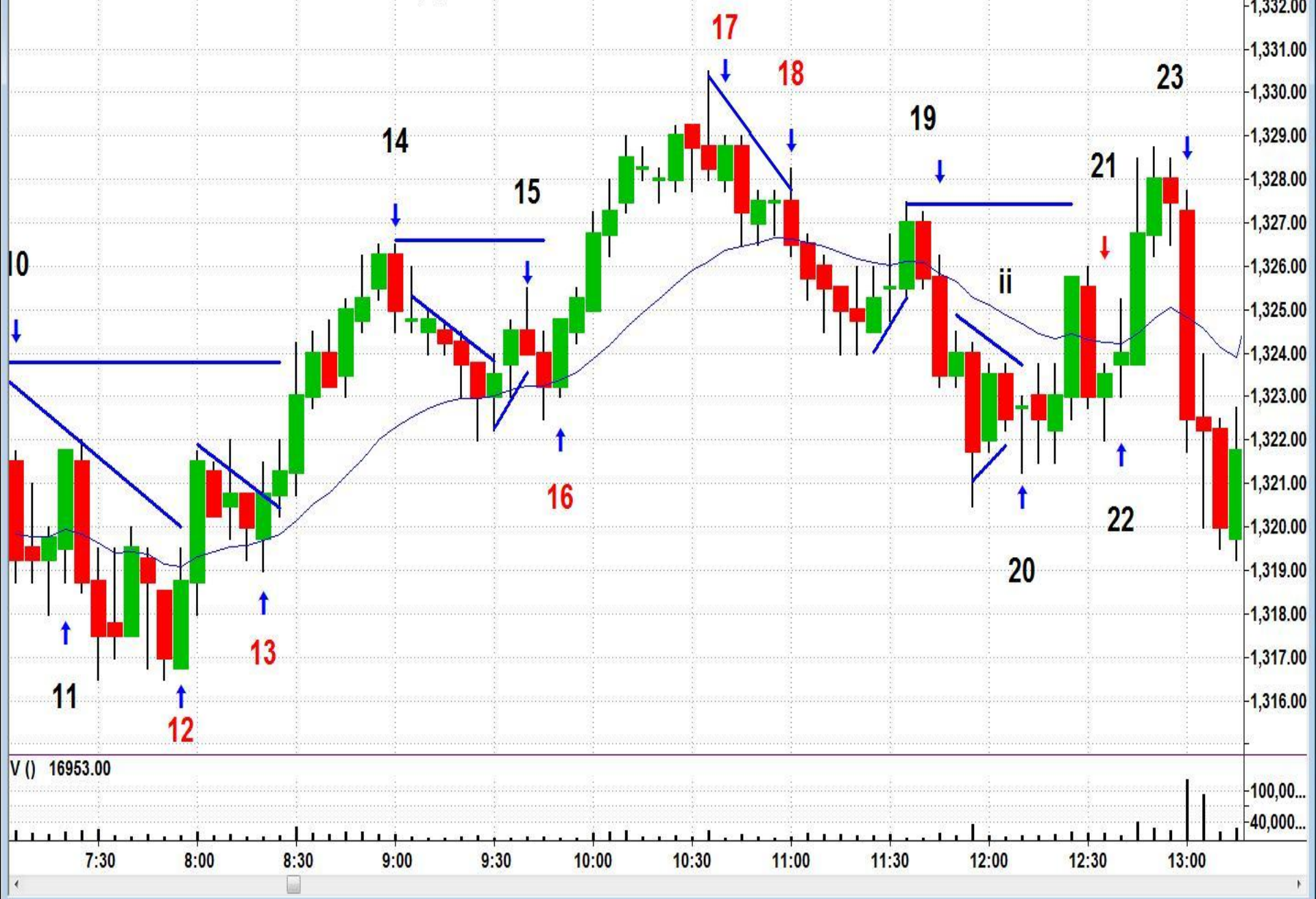
ESM08.D - 5 min CME L=1372.00 -1.50 -0.11% MAX 20 (20) 1373.72



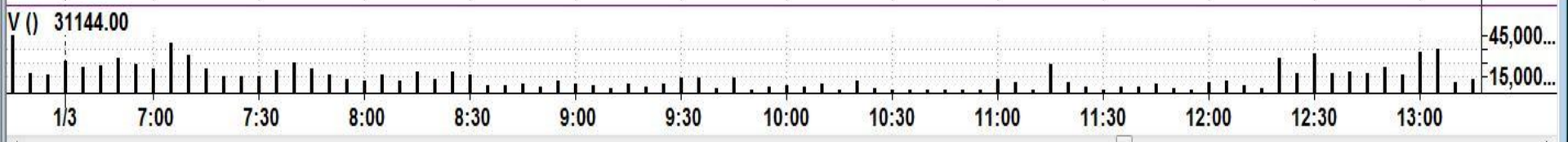
ESM08.D - 5 min CME L=1372.00 -1.50 -0.11% MAX 20 (20) 1373.72



ESM08.D - 5 min CME L=1372.00 -1.50 -0.11% MAX 20 (20) 1373.72



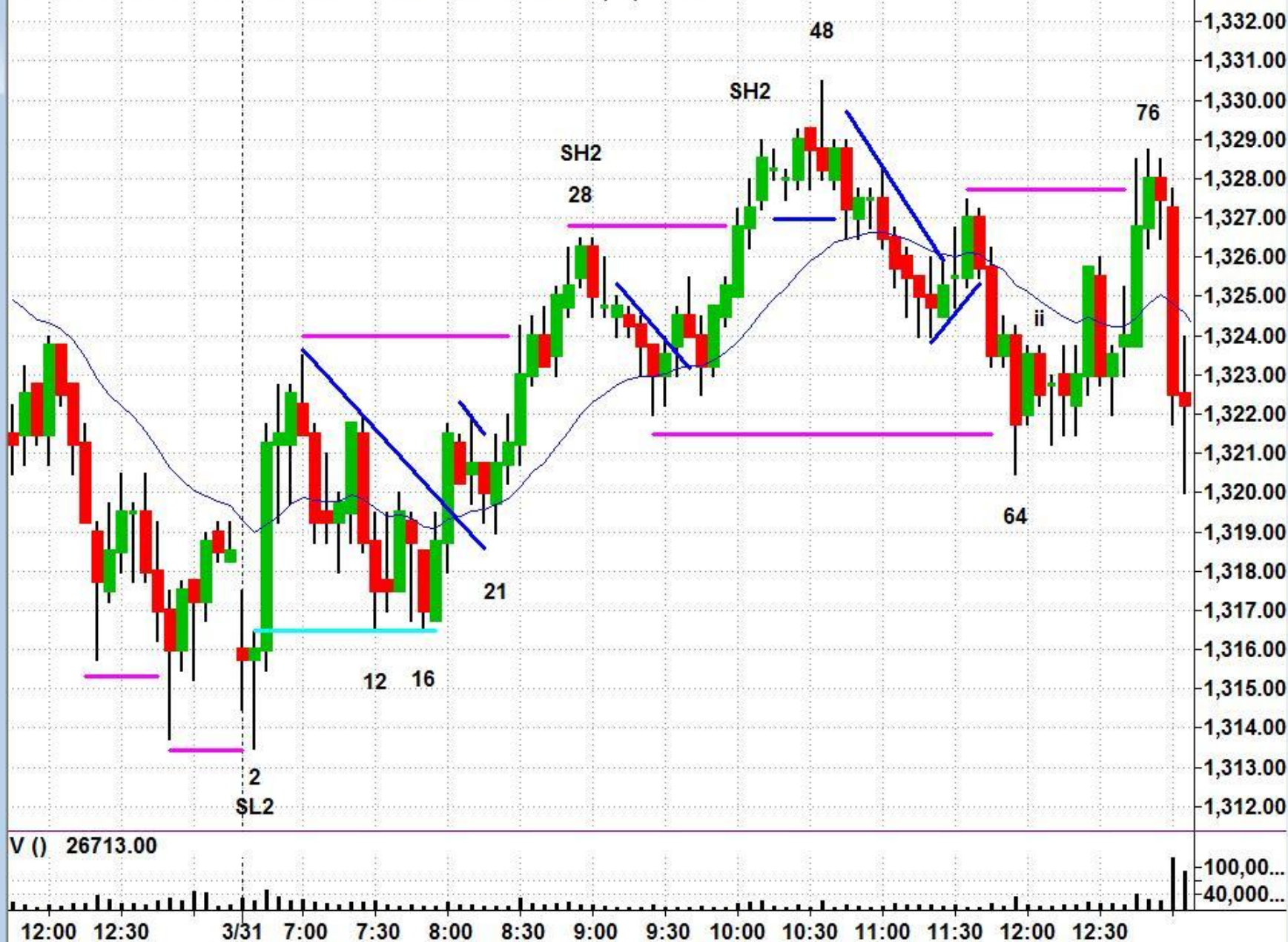
@ES.D - 5 min CME L=1422.50 -36.25 -2.49% MAX 20 (20) 1422.25



@ES.D - 5 min CME L=1422.50 -36.25 -2.49% MAX 20 (20) 1422.25



ESM08.D - 5 min CME L=1370.25 46.25 3.49% MAX 20 (20) 1367.34





Thank You!

For more information on Al Brooks and articles he has written for *Futures*, please go to the Resource Center.