

Questions to answer throughout the day:

- What is the market doing?
- What is the market trying to do?
- How well is it getting it done?

LastPrice	DailyVolu	ATR 2
1874.50	216,510	0.674

Elephant Stomps/TINYS

06:30:25 AM

2.48 :1 NYSE | 1.6 :1 NASD 1874.50 216,510 0.674

Paper buys lite on open/ Open range 1874.5=1875

06:31 Ben: MARCH S&P opening range 1874.50-1875 [open]

07:04:59 AM

2.2 :1 NYSE | 1.32 :1 NASD  
1874.00 371,019 1.23

08:41:29 AM

2.75 :1 NYSE | 1.01 :1 NASD  
1873.00 719,333 1.19

09:01:48 AM

3.47 :1 NYSE | -1.13 :1 NASD  
1870.75 753,632 1.12

10:00:40 AM

2.36 :1 NYSE | 1.03 :1 NASD  
1874.75 849,638 0.982

Extremely light vol. Not much to support bump, but

bump we are having non the less. Feels more like it will be a bump in to more chop trading. We shall see with time.

11:00:22 AM 2.83 :1 NYSE | -1.2 :1 NASD 1871.00 912,475 0.819

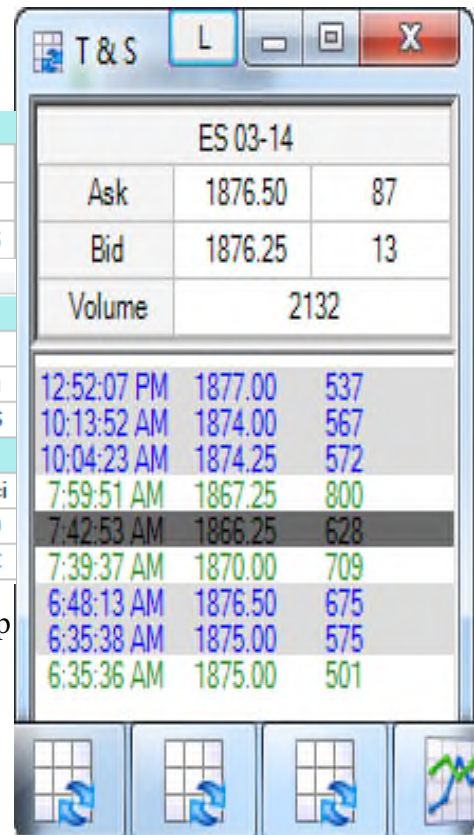
12:00:17 PM 2.23 :1 NYSE | -1.08 :1 NASD 1873.75 968,383 0.728

01:00:19 PM 1.8 :1 NYSE | 1 :1 NASD 1876.00 1,094,28 0.834

CC PAPER BIG SELLER another 500 - 600 cars from what I hear...

13:21 Ben: SP500 pit session close levels HOD 1877.70 LOD 1866

01:22:53 PM 1.72 :1 NYSE | 1 :1 NASD 1877.00 1,151,96 0.824



ES Opening 15 MIN Range = HI	1875 75
Lo	1872
VAL High -	1878
POC	1875 50
VAL Low -	1870 50

SP_Pit Opening Range =	1875	SP Pit Open:
	1874.50	Paper Buy Lite
Sp_Pit END OF DAY High-	1877 70	Cash Close:
Day Low -	1866	Big Paper Sell
CLOSING RANGE:		Pit Close:
High -	1877 70	Answer sells lite
Low -	1877	
Settle -	1877 20	

No Video today... Not in mood, plus no trades for the day... All in all a relatively flat day for me.

**What I did well today:** \* Today was a bit of a SOH day for me. Low volume, conflicted internals, combined with a narrow range really made it difficult to rationalize taking on risk.

**What could I have done better:** \* Maybe I could have done some TICK trading or traded SIM. Yes I shoulda done some SIM trades to follow up on the market as I saw it unfolding.

**What will I do tomorrow to make things better:** \* Assess risk faster and then decide to either enter trades or sit on the side. Follow up and get full nights sleep.

